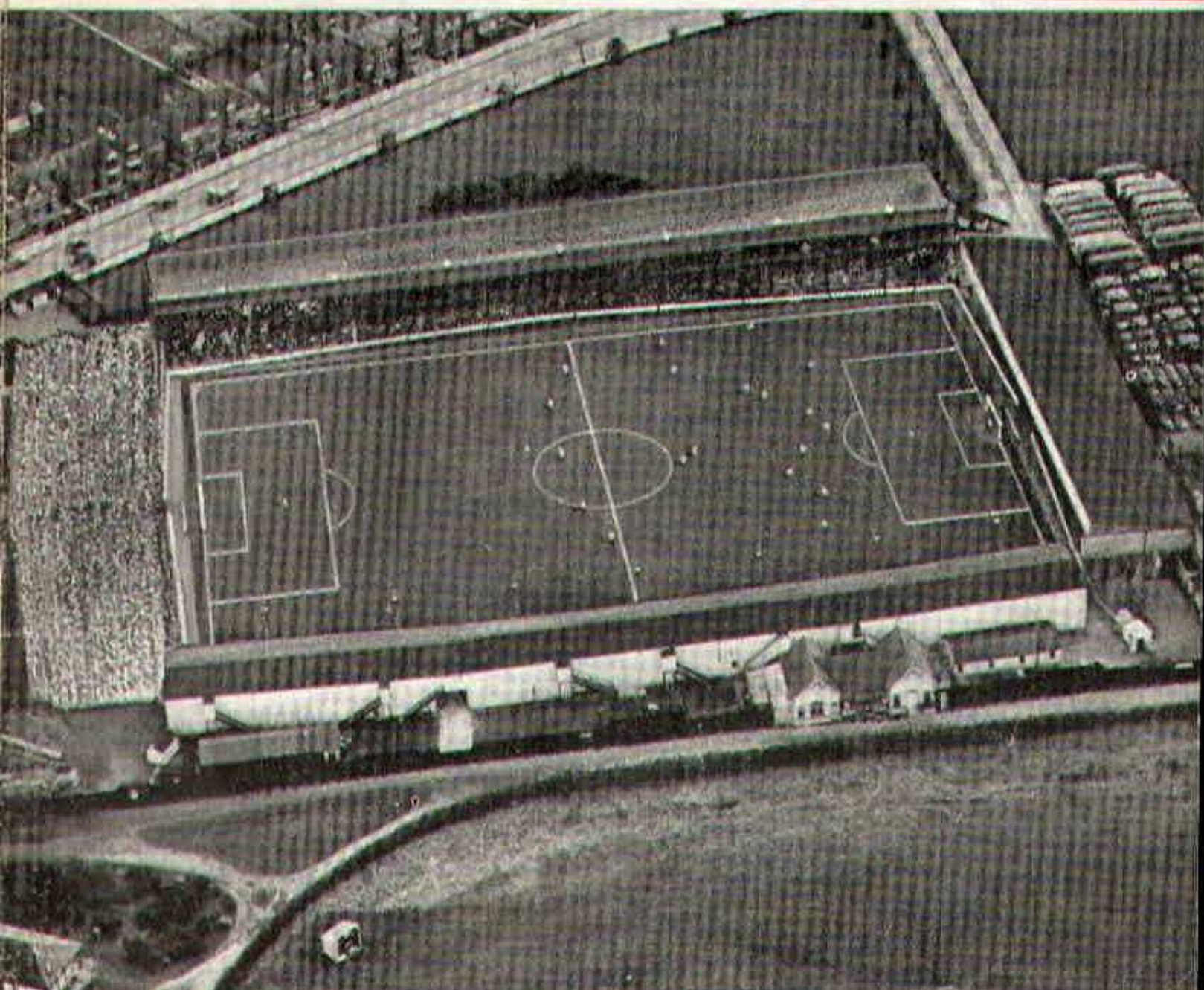


SWINDON TOWN



FOOTBALL CLUB

OFFICIAL PROGRAMME 6d.



FURNITURE AND FURNISHINGS
OF CHARM AND DISTINCTION



CARPETS - FLOORCOVERINGS
LOOSE COVERS - CURTAINS
SKILLED WORKSHOP REPAIR SERVICE
AND REMOVALS



Contractors to Government Departments, Hospitals
and Borough Councils

MILLS & MERRICKS LTD.

16-17 BRIDGE STREET, SWINDON
TELEPHONE 5365/6

SATURDAY, 15th DECEMBER, 1962

DIVISION III

SWINDON TOWN

v.

BARNSELEY

Kick-off 3 p.m.

REFEREE:

Mr. N. C. BURTENSHAW (Great Yarmouth)

LINESMEN:

Red Flag -

Mr. P. PIKE (Birmingham)

Yellow Flag -

Mr. D. MILVERTON (Bath)

for fine printing
you should have
a fine printer

BOROUGH PRESS (SWINDON) LTD

Maylott Studios

For **GROUP & SPORT** Photographs

Official Photographer to
Swindon Town Football Club

31 FARINGDON ROAD

TEL. 22792

NOTTON'S CAFE

COUNTY ROAD

200 yards from Ground

RIGHT ON THE BALL

C. DUNN & SON

BUILDERS & DECORATORS

Alterations, Renovations, Conversions

Plumbers & Sanitary Engineers

503 CRICKLADE ROAD

TEL. 22522

LEESE, ING & Co. Ltd.

Mineral Water and
Squash Manufacturers

Lansdown Rd., Swindon

Telephone 22744

"COALI"
"COALI"
"COALI"

J. WILMER

**ST. MARGARET'S ROAD
SWINDON**

Telephone 22535

L. Wollen

OFF LICENCE

WINES and SPIRITS

Arkell's Ales and Stout

373 Cricklade Rd., Swindon
Deliveries Daily Phone 3508

SWINDON TOWN FOOTBALL COMPANY LIMITED

Registered Office: COUNTY GROUND, SWINDON.

Directors:

Mr. W. J. CASTLE (Chairman) Mr. H. E. LANE (Vice-Chairman)
Mr. B. T. HAMILTON (Hon. Treasurer) Messrs. C. CHANDLER, J.P., J. DAVIES,
R. FRICKER, C. J. GREEN, F. PLYER, H. WILLIAMS and K. H. WILMER
Manager: B. J. HEAD Secretary: R. A. MORSE

VOL. 13

SATURDAY, DECEMBER 15th, 1962

No. 14

CLUB NOTES

Much has happened since the issue of our last programme.

First, the excellent game against Notts County. The football played by our team for sixty minutes was outstanding. We went in at half-time one goal in the lead. It should have been three, with the shots by Jack Smith and Ernie Hunt hitting the upright with the goalkeeper hopelessly beaten.

The Notts keeper had a splendid match, but he was very fortunate on several occasions when the ball hit him. On the other hand, he did, of course, take up good position.

Then came the unfortunate accident to Terry Wollen, resulting in a broken leg. This was followed by the unpleasant incident of a player being ordered off by the referee.

Once the game settled down again, Notts appeared to get into their stride, and played really well and, with the score at 3-1, fought back extremely hard.

WILSONS (SWINDON) LTD.

**BUILDERS OF MODERN ATTRACTIVE
HOUSES AND BUNGALOWS**

Enquiries to:

Head Office: 90 COMMERCIAL ROAD, SWINDON 6361

Site Office: COVENTRY FARM ESTATE, WROUGHTON 271

Site Office: QUEENSFIELD ESTATE, STRATTON S.M. 3405

The Rendezvous of all Sportsmen -

THE CROWN INN

(Host: Frank Plyer)

Arkell's Best Ales : Fully Licensed

Snacks, etc.

Stratton St. Margaret Tel. 2339

Always at your service

L. BIBBY

**For all Types, Rags, Iron and Metal,
etc. Spot Cash Paid. Please Tel.
2101 and our van will call.**

**THE PADDOCK, ERMIN STREET
STRATTON ST. MARGARET**

FISH

POTATOES

**T. QUALITY (Swindon)
LTD.**

Wholesale Merchants

COLLEGE STREET

TEL. 5446/7

**For Best Quality Wet Fish
9 a.m. - 6 p.m. (except Mondays)**

YORK ROAD FISHERIES

**Frying Mid-day Tuesday, Thursday,
Friday and Saturday**

Phone 3680

MARSHGATE GARAGE

MOTOR ENGINEERS :: ROOTES GROUP DEALERS

STRATTON ROAD - SWINDON - WILTS.

Tel. Swindon 22788

TWO MINUTES FROM GROUND

CLUB NOTES - continued

Finally, down came the fog and for the last ten minutes most of the spectators got only fleeting glimpses of the play. We understand, however, that on the actual field visibility was quite good, and the players had little difficulty in following the flight of the ball.

Last Saturday we travelled to Bournemouth for another top-of-the-table battle. Conditions were appalling, with heavy rain falling throughout the match, causing large puddles of water to form on the surface of the pitch. Despite all these factors, we witnessed a fast, open game of football. Bournemouth lost Jones, their left back, after ten minutes with a leg injury caused by a stud (incidentally, he wore no shin guards). Swindon were on top for most of the match; in fact, we had too much of the game. One felt Bournemouth might suddenly break away and score. The superiority of our team was shown by the number of corners awarded to us — twenty-eight in all. Our opponents packed their defence so tightly, however, that we were unable to score.

Now for the games on the County Ground:

Saturday, 8th December. A most entertaining game in the Wiltshire Premier League. The average age of our team — seventeen years.

Result: Swindon 5, Paulton Rovers 2.

PANKHURST

The Palace - Gorse Hill - Swindon

**MOTOR CYCLE - SCOOTER AND
THREE-WHEELER SPECIALISTS**

Open Mon. to Sat. 9 a.m. - 8 p.m.

Phone 5466

Their kit is supplied by

SWINDON SPORTS CENTRE

WHO HAVE THE BEST SELECTION

Tel. 4270

114 COMMERCIAL ROAD

IVOR MESSENGER & SONS

High-Class Family Butchers

QUALITY WITH ECONOMY :: FAIREST PRICES IN TOWN

1 COLLEGE STREET, SWINDON

Tel. 5647

£10 TYPEWRITERS from £10

FULLY GUARANTEED

**Also full selection new standard and portable typewriters
OFFICE EQUIPMENT**

**DOBELL SHEARMAN
& Co. Ltd.**

26 High Street & 33 Faringdon Road, Swindon.

Tel. 4961/2

CLUB NOTES—continued

Monday, 9th December. A hard-fought match in the Youth Cup Competition. All players under eighteen on 1st September 1962.

Result: Swindon 3, Bristol Rovers 0.

The result flattered Swindon somewhat, but we certainly made the most of our scoring opportunities.

Tuesday, 10th December. A splendid Reserve game, again a very young team.

Result: Swindon 6, Fulham 1.

After today's game, we play at Northampton on 22nd December, and on Christmas Day make the long journey to Bradford, to play on the following day. Our next home game — a fortnight today against Bradford.

In the meantime from All of Us to All of You,

A Very Happy Christmas!

**PLEASE DO NOT
CROSS THE PITCH
AFTER THE MATCH**

OUR VISITORS

This afternoon we extend greetings to our friends from the North of England. The meeting between our two clubs last season ended in a 1-1 draw, our scorer being R. Hunt. We hope to better that result today, but there is little doubt that we shall have a hard game. Barnsley have been enjoying a good season and are very near to us in the League table, so today's points are vital if we are to maintain our challenge.

Details of the players from whom today's team will be selected are as follows:—

Hill, Alan (Goalkeeper).

6ft. 12st. 2lb. Alan is one of a number of local-born players with the club. He is a product of the highly successful Barnsley Town Schoolboys' Team. He joined Barnsley two-and-a-half years ago.

Hopper, Allan (Right Back).

5ft. 9ins. 11st. 4lb. Allan came to the fore last season, when he reached top form. He was signed from South Shields in February 1961.

Brookes, Eric (Left Back).

5ft. 11ins. 11st. 9lb. Eric, another local-born player, is also a former Barnsley Schoolboys' player. He is a former England Youth International. He became a professional in April 1961 and made his League debut while on the club's groundstaff.

Wood, Bobby (Right Half and Captain).

5ft. 9ins. 12st. 9lb. Bobby, who joined the club eleven years ago from Hibernians, is a 100% worker and is always ready to try a shot at goal. He has given Barnsley great service.

For Quality FLOWERS - FRUIT - VEGETABLES
also FROZEN FOODS

CLARKE'S of Old Swindon

Proprietors: A. G. G. and J. A. W. HUNT

64 DEVIZES ROAD - SWINDON

Phone 22337

ORDERS DELIVERED

SEA VIEW CAMP

Camp Road, Wyke Regis, Weymouth. Tel 3351

Site overlooks Chesil Beach - Ideal for Camping Parties
Also Modern Caravans for Hire

Swindon Bacon Curing Co. Ltd.

Specialists in

BACON - PORK - COOKED HAM

50 FLEET STREET, SWINDON

Telephone 22122

Meet your friends for an enjoyable evening at

THE KINGSDOWN INN

(Host A. W. Vann)

FULLY LICENSED - ARKELL'S BEERS

SNACKS - Etc.

STRATTON ST. MARGARET

Tel. 3283

OUR VISITORS - continued

Winstanley, Eric (Centre Half).

6ft. 11st. 9lb. Eric, who joined the club's groundstaff from Barnsley Boys' Team, is another former England Youth International. He got his chance this season following the retirement of stalwart Duncan Sharp. Eric became a professional in May of this year.

Houghton, Billy (Left Half).

5ft. 9ins. 11st. 9lb. Billy, a strong wing half, is another Barnsley-born player who graduated through the local schoolboys' team. He is also a former Youth International. He became a professional in May 1957.

Hosie, James (Outside Right).

5ft. 8ins. 10st. 4lb. Hosie was signed in the close season from Aberdeen, where he was born. In his first few matches for the Yorkshire club he has created a very good impression.

Oliver, Kenneth (Inside Right).

5ft. 10ins. 11st. 8lb. Ken was signed from South Shields in March 1960. He is very useful in the air and has a quick eye for a goal.

Bartlett, Frank (Inside Right or Wing Half).

5ft. 10ins. 11st. 6lb. Frank, who has given 100% to Barnsley, was signed from Blackhall Colliery, Durham, in April 1950. He has filled every forward position for the club.

Leighton, Tony (Centre Forward).

5ft. 9ins. 11st. 6lb. Tony was given a free transfer by Doncaster Rovers at the end of last season although the club's leading scorer. Barnsley promptly snapped him up. He is a useful cricketer as well as a thrusting forward.

OUR VISITORS – continued

Kerr, George (Inside Left).

5ft. 8ins. 11st. 4lb. George was signed in May 1960 from the Scottish Junior Club, Vale Juniors. He is a clever ball player.

O'Hara, Eddie (Outside Left).

5ft. 6ins. 11st. 6lb. O'Hara was signed in the close season from Morton, the Scottish club. He had previously played with Rotherham United.

Ring, Tommy (Outside Left).

5ft. 7ins. 10st. 6lb. Tommy is a former Everton and Scottish International outside left. He joined Barnsley in November last year.

Swift, Colin (Right Back).

Born Barnsley. 5ft. 8ins. 11st. 2lb. Colin, like so many Barnsley first-teamers, is a product of the consistently successful Barnsley Schoolboys' team. Colin is steady without any flourishes.

Jagger, George (Outside Left).

Born Great Houghton. 5ft. 8ins. 9st. 2lb. George joined the club from Icaom football as a winger, then he developed into a useful wing half, in which position he made his League debut last season. Towards the end of the season he blossomed out as a left winger again.

B. J. MARTIN & SONS LTD.

Butcher

10 HIGH STREET
MARLBOROUGH
Phone 212

126 VICTORIA ROAD
SWINDON
Phone 4860

CLARK BROS. (SWINDON) LTD.

**BUILDING AND CIVIL ENGINEERING
CONTRACTORS**

SWINDON

Telephone: Swindon 3417/8/9

Do not let **CHILBLAINS** spoil a good game

RELAPERNE

Price 2/6 from your CHEMIST

2/10 Post Paid from

Ballard & Co. (Chemists) Ltd., Faringdon, Berks.

DIVISION III LEAGUE TABLE

	P	W	D	L	F	A	Pts.
Peterborough United ...	23	12	5	6	57	38	29
Bournemouth ...	23	9	10	4	31	22	28
Northampton Town ...	22	10	7	5	51	33	27
Watford ...	23	13	1	9	52	40	27
Notts County ...	22	11	5	7	32	32	27
Queen's Park Rangers ...	21	11	4	6	46	26	26
Swindon Town ...	22	9	8	5	44	28	26
Port Vale ...	23	10	6	7	30	24	26
Coventry City ...	22	9	8	5	42	36	26
Southend United ...	22	12	1	9	43	43	25
Wrexham ...	21	11	1	9	42	43	23
Shrewsbury Town ...	23	7	8	8	51	46	22
Colchester United ...	23	7	8	8	39	48	22
Hull City ...	21	8	5	8	37	35	21
Bristol City ...	22	7	7	8	46	44	21
Barnsley ...	22	8	5	9	32	33	21
Bristol Rovers ...	23	8	5	10	37	46	21
Millwall ...	22	4	11	7	41	45	19
Reading ...	22	8	2	12	36	38	18
Brighton & H. A. ...	23	5	7	11	31	46	17
Bradford ...	22	5	7	10	30	48	17
Halifax Town ...	23	5	7	11	30	50	17
Crystal Palace ...	22	3	8	11	21	38	14
Carlisle United ...	20	3	6	11	22	41	12

51
58
29
27
28
27

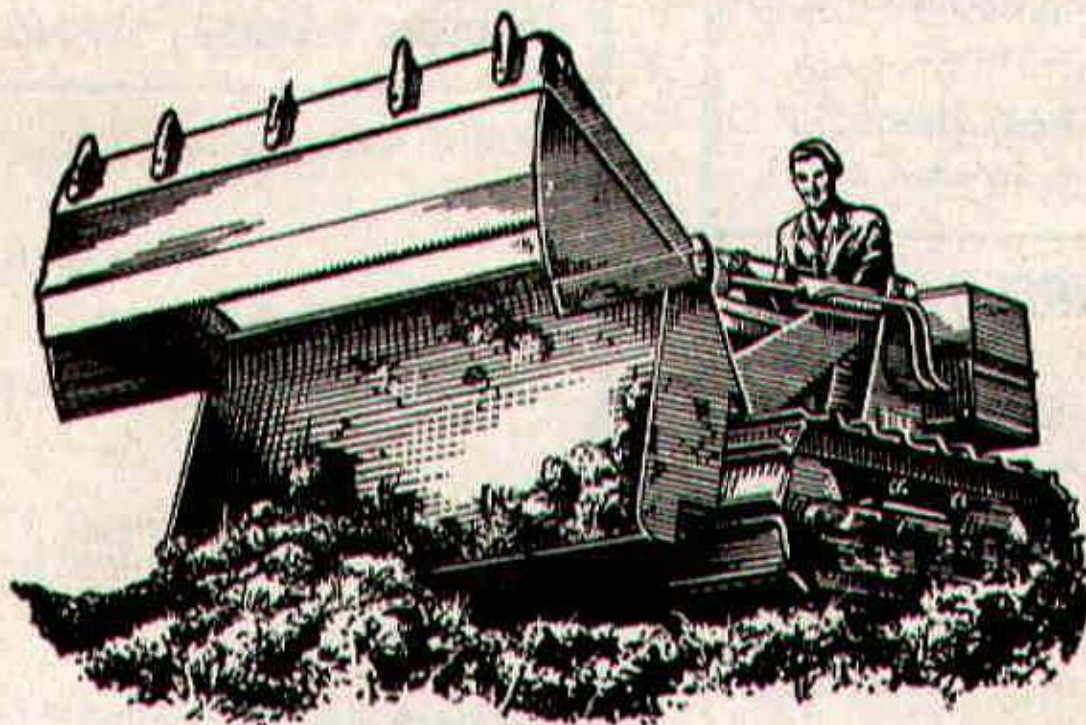
DIVISION III FIXTURE LIST

Date	Opponents	Ground	Result
August 18	BARNSELY	(A)	1-1
21	COVENTRY CITY	(H)	4-1
25	NORTHAMPTON TOWN	(H)	2-3
28	COVENTRY CITY	(A)	0-2
September 1	QUEEN'S PARK RANGERS	(A)	2-2
4	BRIGHTON and HOVE ALBION	(A)	1-1
8	HULL CITY	(H)	2-0
11	BRIGHTON and HOVE ALBION	(H)	5-1
15	CRYSTAL PALACE	(A)	0-0
18	CARLISLE UNITED	(A)	0-0
22	WREXHAM	(H)	3-0
25	DARLINGTON (Cup)	(H)	4-0
29	HALIFAX TOWN	(A)	3-4
October 2	BRISTOL ROVERS	(H)	3-0
6	WATFORD	(H)	3-1
9	BRISTOL ROVERS	(A)	0-2
13	BRISTOL CITY	(A)	2-2
20	READING	(H)	1-1
27	PORT VALE	(A)	1-2
November 3	(1) READING	(H)	4-2
10	MILLWALL	(A)	4-3
17	SOUTHEND UNITED	(H)	4-1
24	(2) YEOVIL	(A)	2-0
December 1	NOTTS COUNTY	(H)	3-1
8	BOURNEMOUTH and B.A.	(A)	0-0
15	BARNSELY	(H)	
22	NORTHAMPTON TOWN	(A)	
26	BRADFORD	(A)	
29	BRADFORD	(H)	
1963			
January 5	(3) LUTON TOWN	(A)	
12	QUEEN'S PARK RANGERS	(H)	
14	COLCHESTER UNITED	(A)	
19	HULL CITY	(A)	
26	(4) SHREWSBURY TOWN	(H)	
February 2	CRYSTAL PALACE	(H)	
9	WREXHAM	(A)	
16	(5) HALIFAX TOWN	(H)	
23	WATFORD	(A)	
March 2	BRISTOL CITY	(H)	
8	(6) READING	(A)	
16	PORT VALE	(H)	
23	SHREWSBURY TOWN	(A)	
30	(S.F.) MILLWALL	(H)	
April 6	SOUTHEND UNITED	(A)	
12	PETERBOROUGH UNITED	(H)	
13	COLCHESTER UNITED	(H)	
15	PETERBOROUGH UNITED	(A)	
20	NOTTS COUNTY	(A)	
27	BOURNEMOUTH and B.A.	(H)	
May 4	(FINAL)		

H. HIBBERD LIMITED

40 NEWPORT STREET - SWINDON

PLANT HIRE



TRACTORS and SCRAPERS

BULLDOZERS

DROTT SHOVELS

J.C.B. and DINKUM DIGGERS

ROAD ROLLERS

TELEPHONE: SWINDON 6125

Hatton's Newsagency

A. J. D. Woodhouse and A. Smith

**Newsagents :: Tobacconists
Confectioners**

Agents for Wessex School of
Motoring

Main Booking Agents for Millers
Coaches

6 Regent Circus (near G.P.O.)
Telephone Swindon 22731

HULFORD MOTORS Ltd.

SELF DRIVE HIRE

Fleet of 1962 Fords
Populars - Anglias - Consuls

SHRIVENHAM ROAD

(200 yards from Football Ground)

Phone 4934

Large Car Park available

For High Class
Central Heating, Plumbing
Painting and Decorating
Electrical Installations
and Repairs

**NORTH WILTS
Sanitary & Heating
Co. Ltd**

NEWPORT ST., SWINDON
Phone 5373/4

WARNES (Swindon)

Electrical Contractors - Rad

Contractors to SWINDON TOWN

**160 COUNTY ROAD, SWINDON
9 SWINDON STREET, HIGHWORTH
7 CLIVE PARADE, SWINDON**

RIGHT WING

SWINDON
Turner

Owen (2)

Morgan (4)

McPherson (5)

Summerbee (7)

Hunt (8)

Smith (9)

Swindon Colours:
RED SHIRTS, WHITE SHORTS

**FOOTBALL
PINK**

O'Hara (11)

Oliver (10)

Leighton (9)

Houghton (6)

Winstanley (8)

Brookes (3)

Hill

LEFT WING

BARNESLEY

WARNES T.V.

TO BE SU

51 Commercial Road - Swindon
and Branches

(Swindon) LTD.

ors - Radio and Television

NDON TOWN FOOTBALL CLUB

N
RTH

PHONE 6346/7

PHONE 379

PHONE 6346/7

SWINDON

LEFT WING

Turner

Trollope (3)

Pherson (5)

Woodruff (6)

Smith (9) Jackson (10) Rogers (11)

**FOOTBALL
PINK**

These teams are subject
to alteration

Leighton (9) Kerr (8) Hosie (7)

Winstanley (5) Nicol (4)

Hopper (2)

Hill

BARNESLEY

RIGHT WING

T.V. RENTALS

BE SURE

d - Swindon - Phone 6486

d Branches

McILROYS

RESTAURANT

for morning coffee,
luncheon and
afternoon tea - in
pleasant surroundings -
you will find McIlroys
are top of the
'league'.

Full table service, best Beers
and Wines. Parties and
Functions catered for.

McIlroys Restaurant

64-72 Regent Street

Tel. 5294



THE ALCOHOL FUEL

COATE GARAGE

REPAIRS - OVERHAULS - WELDING
SERVICING - REBORING - TYRES

Props. E. V. & W. H. Mattick

Marlborough Rd., Swindon

SUPPORTERS' CLUB NOTES

As this is the last occasion on which we shall appear in print before Christmas, we take this opportunity to extend our greetings to all at the County Ground — the Directors, Officials and Players of Swindon Town F.C., members of our own club, and to supporters generally.

A Happy Christmas for a football club is usually measured in terms of points and we trust that the season will be "festive" in that respect.

Especially at this time we shall be thinking of Terry Wollen, and all will unite in wishing him a speedy and complete recovery from his injury.

It is customary, when a player is seriously injured, for a small gift to be sent to him from this club, so that he may know that he is not forgotten, and that supporters are wishing him well. We have followed the usual practice on this occasion.

Several times in the past, the writer has been privileged to visit players in their homes or in hospital, when recovering from injuries or operations, and, consequently, we are well aware of the satisfaction they derive from knowing that they are still in the minds of supporters.

Plans are afoot for an early meeting between the Committee of this club and the Directors and Officials of the Town F.C., as a result of which we hope that there will be

HAVE YOU SIGNED ON YET

FOR
YOUR

SWINDON ECHO

4d.
WEEKLY

IF NOT THEN DO SO AT YOUR LOCAL NEWSAGENT
AND JOIN OUR GROWING TEAM OF READERS

For your pleasure try

RIVERSIDE LECHLADE LTD.

Tea Room and Gardens - Boating

4 Berth and 2 Berth Cabin Cruisers for hire, also Motor Boats,
Camping Punts, Rowing Boats, Canoes, etc. Parties catered for.

PRIVATE CAR PARK

Telephone: Lechlade 229

Little & Co. Ltd.

Try us for
Clothes for all
the family on
all occasions

**31-32 FLEET STREET
SWINDON**

Tel.

22831

**THE POPULAR MEN'S & LADIES'
COMPLETE OUTFITTERS**

We have a
reputation for
Value & Service
that is second
to none

SEE THE LOVELY SELECTION OF
CHOCOLATES AND SWEETS
Greetings Cards a Speciality

CECIL GREEN

CONFECTIONER AND TOBACCONIST

13 VICTORIA ROAD

Telephone 4416

SUPPORTERS' CLUB NOTES - continued

some financial benefit to the latter. More of this later in the Press.

Mention of Barnsley, our visitors today, brings to the minds of older supporters memories of Cup-ties — the famous semi-final of 1911-12, when Swindon were beaten and Barnsley went on to win the Cup.

George Travers, one of their forwards, came to Swindon later, for one season.

Again in Season 1922-23, the teams met, this time at the County Ground. On that occasion the writer was a small boy, temporarily on crutches, and through the kindness of the late Fred Wiltshire, then the team's trainer, was given a ringside seat, near the players' entrance.

Chief memories of that match, which ended in a 0-0 draw, are of a lady spilling a whole cup of tea down the back of one's neck, and of spending a most uncomfortable second half.

Since then we have strongly disapproved of the sale of tea at football matches and have renounced the ring seats entirely.

The replay ended in a 1-0 win for Barnsley.

They have always been a hard team to beat, and two points today would put our supporters in the right mood for the Christmas season.

F. J. ROPER
DEVIZES RD.
SWINDON

Phone 22341

FERNDALE
FISHERIES
FERNDALE RD.
SWINDON

Phone 3614

**SWINDON'S
FINEST
FISH and CHIPS**

**CALL ON
YOUR
WAY
HOME**

F. J. ROPER
CLIFTONIAN
38 WILLIAM ST.
SWINDON
Phone 3785

**WE SHALL BE
WAITING
TO
SERVE YOU**

Menu

**Plaice
Hake
Cod
Skate**

F. J. ROPER
HIGH ST.
WOOTTON
BASSETT

F. J. ROPER
CROSS HAYES
MALMESBURY

SWINDON TOWN F.C. DEVELOPMENT FUND COMPETITION

WINNING NUMBERS

Week 24 — Saturday, December 8th to Friday, December 14th

Day	Prize	Winning No.
Saturday	£100	14014D
	£25	2683D
Monday	£20	11797D
Tuesday	£20	3987D
Wednesday	£20	10570D
Thursday	£20	3958D
Friday	£20	11022D

SWINDON TOWN F.C. SUPPORTERS' CLUB WEEKLY COMPETITION

WINNING NUMBERS

Week 15 — Monday, December 3rd to Saturday, December 8th

Day	Prize	Winning No.
Monday	£20	13179
	£5	962
Tuesday	£20	13960
	£5	6807
Wednesday	£50	11911
	£10	984
Thursday	£20	11184
	£5	1994
Friday	£20	1592
	£5	10821
Saturday	£100	15779
	£20	15221

This space is reserved for

EDWIN H. BRADLEY & SONS LTD.

Builders - Swindon

Eric

(E. Ayliffe)

GENTLEMEN'S HAIRDRESSER

57/59 Faringdon Road, Swindon.

Phone 4569

APPOINTMENTS MAY BE BOOKED IN PRIVATE SALON

ALSTON & YOUNG LTD.

121-123 CRICKLADE ROAD, SWINDON.

Tel. 6671

Scooter and Three-Wheeler Specialists

Main Agents - LAMBRETTA - VESPA - TROJAN

First class after sales service

Open daily 9.0 a.m. to 7.30 p.m.

SUPPORT YOUR HOME

CIVIL DEFENCE

**Plays a vital part in saving lives
in PEACE or WAR**

Particulars:

CIVIC OFFICES, SWINDON

**WISES CATERING
SERVICE**

(Reg. Wise)

**Our Caterer for the past 14 seasons
Guarantees**

**A GOOD CUP OF TEA AT THE
COUNTY GROUND**

**A full range of Sweets & Cigarettes
at any of our five kiosks on your
way in. ENJOY YOURSELF!**

KEY OF THE BOARD

First Section

- A—Arsenal v. Leyton O.
- B—Birmingham v. Tottenham
- C—Blackburn v. Ipswich
- D—Blackpool v. Liverpool
- E—Bolton v. Sheffield W.
- F—Everton v. Burnley
- G—Leicester v. Fulham
- H—Manchester C. v. Wolverhampton
- I—Sheffield U. v. Nottingham F.
- J—West Bromwich A. v. Manchester U.
- K—West Ham U. v. Aston Villa
- L—Chelsea v. Rotherham
- M—Derby v. Huddersfield
- N—Leeds v. Stoke
- O—Luton v. Bury
- P—Middlesbrough v. Sunderland
- Q—Newcastle v. Cardiff
- R—Norwich v. Preston N.E.
- S—Southampton v. Scunthorpe
- T—Walsall v. Portsmouth

Second Section

- A—Brighton v. Queen's Park Rangers
- B—Bristol R. v. Hull
- C—Carlisle v. Northampton
- D—Halifax v. Crystal Palace
- E—Notts. C. v. Coventry
- F—Southend v. Watford
- G—Aldershot v. Darlington
- H—Bradford C. v. Oldham
- I—Chesterfield v. Workington
- J—Crewe v. Southport
- K—Oxford U. v. Barrow
- L—Rochdale v. Mansfield
- M—Torquay v. Exeter
- N—York v. Stockport

BRETTS PET AND GARDEN SUPPLIES

32-33 COMMERCIAL ROAD

and

6 CROMWELL STREET - SWINDON

When thinking of your new
T.V. - Radio - Washing Machine - Refrigerator
make your **GOAL**

HOLMES & LUCAS

14 REGENT STREET - SWINDON

Stockists of all leading makes

Telephone 22526-4721

FOR ALL YOUR ANGLING NEEDS
CONSULT

FRANK WOODWARD

Swindon's Fishing Tackle Specialist

25 HAVELOCK ST., SWINDON
PHONE 3879

For Paints of Good Quality
H. S. HODGES & SONS
(SWINDON) LTD.

CRICKLADE RD. - SWINDON
PHONE 22422

Dulux, Brolac, Friary, Valspar,
Wallcharm, etc.

SOUTHERN LAUNDRY Co. Ltd.

Launderers and Dry Cleaners

STATION ROAD - SWINDON
TELEPHONE 4161

COMLEY'S

Modern Music Centre
26 HAVELOCK ST., SWINDON
RECORDS - MUSIC - INSTRUMENTS

Top Twenty 'Pops' always in stock
and wide selection of Jazz & Classics
Personal Supervision **Phone 3874**

FOOTBALL COMBINATION

Fixtures and Results to date

Date	Opponents	Ground	Result
August 18	SOUTHEND	(H)	3-1
21	MILLWALL	(A)	1-2
25	BOURNEMOUTH and B.A.	(A)	3-1
September 1	CHELSEA	(H)	0-2
3	WATFORD	(A)	2-2
18	QUEEN'S PARK RANGERS	(H)	3-2
26	SOUTHAMPTON	(A)	3-3
October 23	COVENTRY CITY	(H)	2-0
27	ALDRSHOT	(H)	0-0
November 7	LEYTON ORIENT	(A)	3-6
10	BRIGHTON	(H)	1-0
27	BRENTFORD	(H)	2-2
December 8	CHARLTON	(A)	2-2
11	FULHAM	(H)	6-1
19	PORTSMOUTH	(A)	
22	BIRMINGHAM	(A)	

1963

January 1	READING	(H)	
9	READING	(A)	
15	BOURNEMOUTH and B.A.	(H)	
19	SOUTHEND	(A)	
29	WATFORD	(H)	
February 4	QUEEN'S PARK RANGERS	(A)	
12	MILLWALL	(H)	
23	CHELSEA	(A)	
26	SOUTHAMPTON	(H)	
March 6	COVENTRY CITY	(A)	
9	ALDRSHOT	(A)	
19	LEYTON ORIENT	(H)	
23	BRIGHTON	(A)	
April 6	BIRMINGHAM	(H)	
9	BRENTFORD	(A)	
16	CHARLTON	(H)	
22	FULHAM	(A)	
30	PORTSMOUTH	(H)	

WILTSHIRE PREMIER LEAGUE

Fixtures and Results to date

Date	Opponents	Ground	Result
August 18	RADSTOCK	(H)	1-1
22	PINEHURST	(A)	1-4
25	STONEHOUSE	(A)	3-0
29	PINEHURST	(H)	1-0
September 1	PURTON	(H)	3-1
8	CALNE	(A)	2-0
15	DEVIZES	(H)	6-1
19	FROME	(A)	1-3
22	TROWBRIDGE	(H)	2-0
29	FROME	(H)	3-0
October 6	WARMINSTER	(H)	3-1
13	PEASEDOWN	(A)	2-1
20	CLANDOWN	(H)	6-0
27	PAULTON	(A)	1-1
November 3	WESTBURY	(H)	5-4
10	MELKSHAM	(A)	0-3
24	CHIPPENHAM	(H)	6-1
December 1	WOOTTON BASSETT	(A)	4-1
8	PAULTON R.	(H)	5-2
15	STONEHOUSE	(H)
22	PURTON	(A)
29	CALNE	(H)

1963

January 5	DEVIZES	(A)
19	WARMINSTER	(A)
26	PEASEDOWN	(H)
February 2	CLANDOWN	(A)
9			
16	WESTBURY	(A)
23	MELKSHAM	(H)
March 2	CHIPPENHAM TOWN	(A)
9	WOOTTON BASSETT	(H)
16	SWINDON B.R.	(A)
23	RADSTOCK	(A)
	TROWBRIDGE (to be arranged)	(A)

FORTHCOMING MATCHES

SATURDAY, DECEMBER 29th

Division III

SWINDON TOWN

v.

BRADFORD

Kick-off 3 p.m.

TUESDAY, 1st JANUARY, 1963

FOOTBALL COMBINATION

SWINDON TOWN

v.

READING

Kick-off 7.30 p.m.

*We extend to all our Supporters
Good Wishes for a Merry Christmas
and a Happy and Prosperous
New Year.*

G. A. STREETLY

Tobacconist and Confectioner

10 BOURNE ROAD - MOREDON - SWINDON

Telephone: 4956

ADVERTISING SPACE

IN THIS PROGRAMME

TO LET

Apply:-

SECRETARY,
SWINDON TOWN F.C.,
COUNTY GROUND, SWINDON

Have you purchased your ticket for the

DEVELOPMENT FUND COMPETITION?

TICKETS 1/- each

Draw at half-time today for

£100 & £25

other Prizes Monday to Friday

£20 EACH DAY

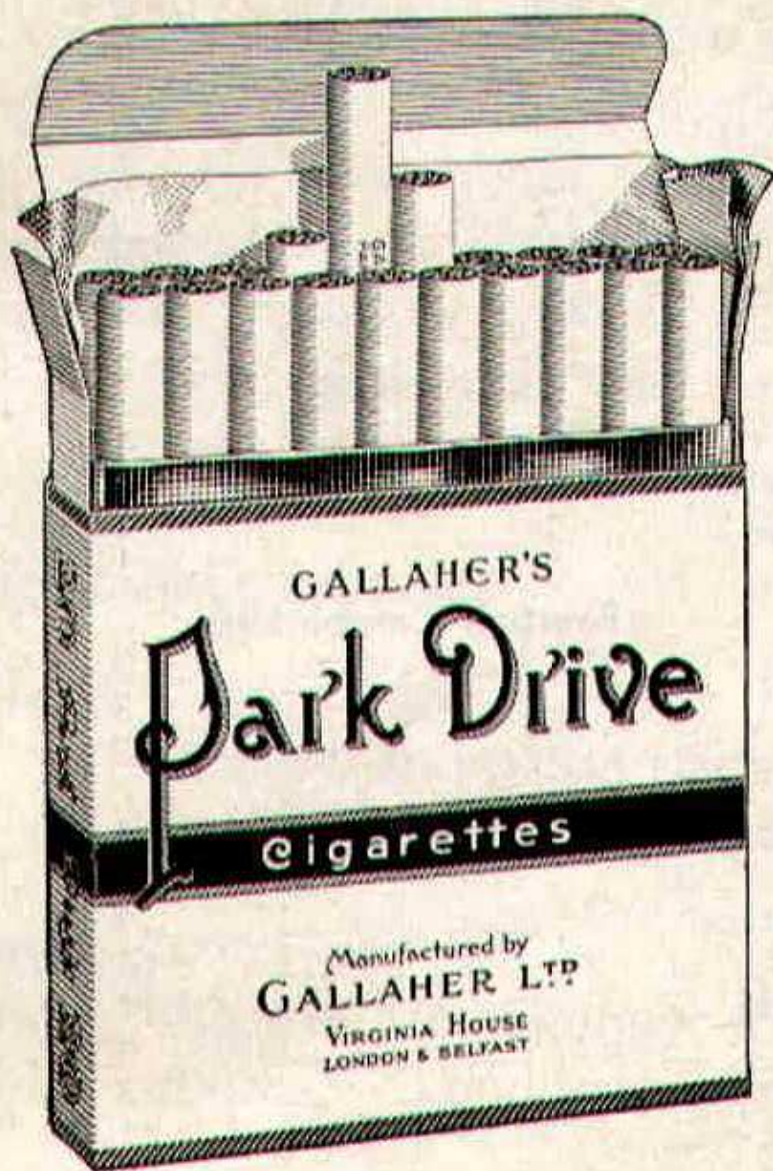
Results published daily in -

"Daily Sketch"

"Evening Advertiser" and

"Bristol Evening Post"

PARK DRIVE



for pleasure

PLAIN 20 for 3/5 TIPPED 20 for 2/10

PLAYERS APPEARANCES AND GOAL SCORERS

	Division III		F.A. Cup and League Cup	
	Appearances	Goals	Appearances	Goals
Turner	19	-	4	-
O'Hara	3	-	-	-
Wollen	21	-	4	-
Trollope	22	1	4	-
Morgan	22	-	4	-
Owen	17	-	2	-
Woodruff	22	1	4	-
Summerbee	13	1	4	-
Darcy	17	4	3	-
Hunt	21	10	4	3
Smith	22	10	4	5
Atkins	3	-	-	-
Smart	7	2	-	-
Jackson	22	13	4	2
McPherson	6	-	2	-
Stevens	1	-	-	-
Rogers	3	1	1	-

Football Combination

O'Hara	*****	*****	*****	9	-
Hicks	*****	*****	*****	3	-
Turner	*****	*****	*****	2	-
Hellin	*****	*****	*****	12	-
Dawson	*****	*****	*****	14	-
Smart	*****	*****	*****	11	3
McPherson	*****	*****	*****	7	-
Harber	*****	*****	*****	14	-
Shergold	*****	*****	*****	11	-
Darcy	*****	*****	*****	1	-
Stevens	*****	*****	*****	13	14
Leggett	*****	*****	*****	11	3
Weaver	*****	*****	*****	9	3
Rogers	*****	*****	*****	10	1
Colsell	*****	*****	*****	1	-
Atkins	*****	*****	*****	7	3
Summerbee	*****	*****	*****	2	1
Mellor	*****	*****	*****	3	-
Leyton	*****	*****	*****	1	-
Jackson	*****	*****	*****	1	-
Huxford	*****	*****	*****	4	-
Owen	*****	*****	*****	1	-

STAND TICKETS

Tickets for seats in the Old and New Stands may be booked in advance. Postal applications should be accompanied by a remittance and stamped addressed envelope. Tickets ordered by telephone must be collected not later than 12 noon on the day of the match, otherwise they will not be reserved.

Prices for League Matches:-

New Stand: Block C-6/6 (Centre)

Blocks B and D-5/6 (Side Stands)

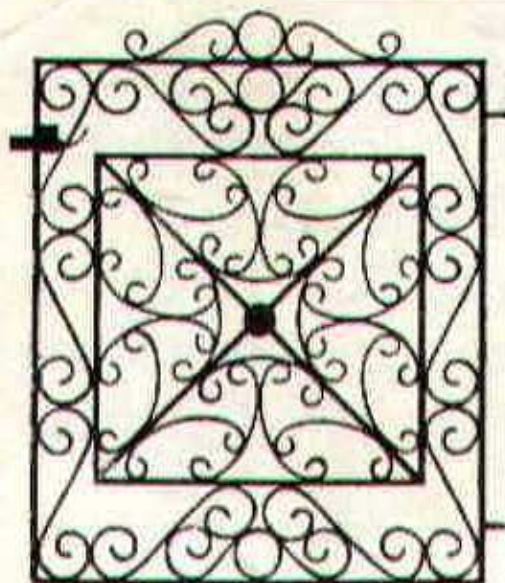
Blocks A and E-4/6 (Wing Stands)

Old Stand: Centre Box-8/-

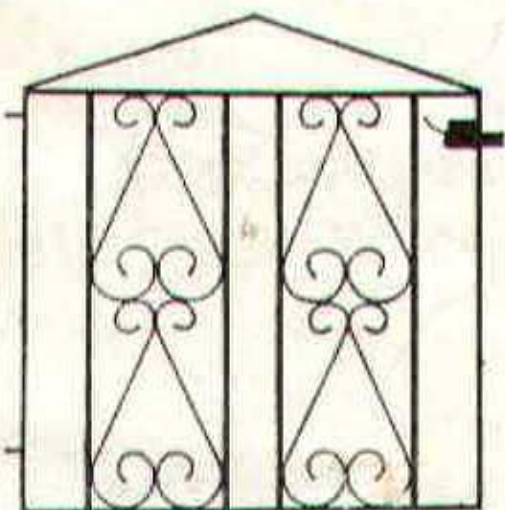
Block H-5/6 (Centre)

Blocks F, G and I-4/- (Side Stands)

Postal applications to: Secretary, Swindon Town F.C., County Ground, Swindon, Wilts. Telephone Swindon 22118.



T.G. 621



T.G. 626

Gates from 58/-
Singles and Doubles

If you live in the Swindon
area we will measure your
Gateway for you.

Our Decorative Ironwork
also includes:

FIRESCREENS
COFFEE TABLES
LAMPS
BRACKETS
CORNER TABLES
BALUSTRADES

SEND FOR FREE CATALOGUE
MARTYN LYNshaw LIMITED

20 Boundary Works, Stratton Road,
SWINDON. TEL. 4177